

# Premier Equipment Research Farm See & Spray Ultimate 2024 Insights





# See & Spray Ultimate Demo Insights

Premier Equipment Research Farm

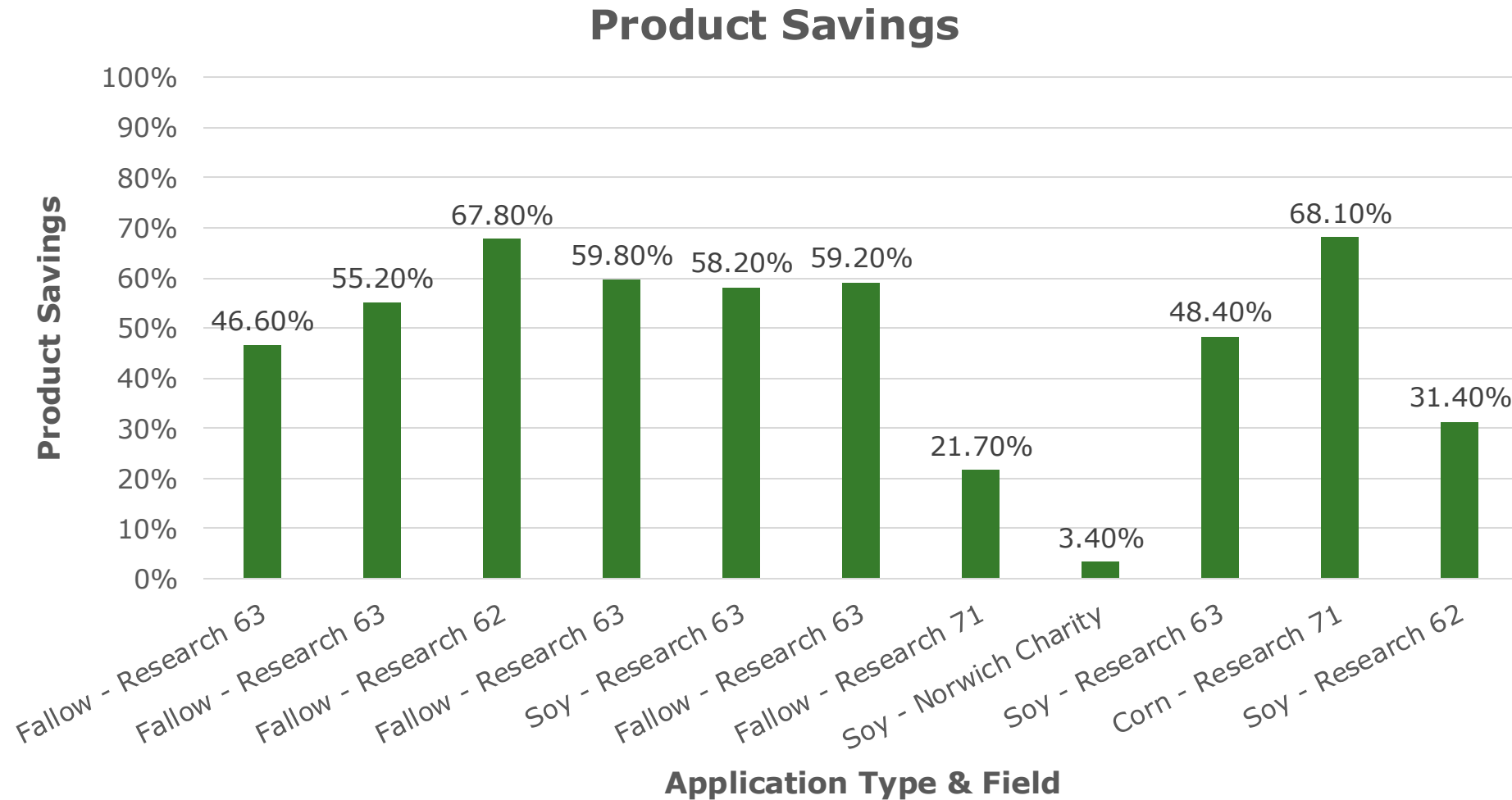
## Equipment Evaluated:

- MY24 412R With See & Spray™ Ultimate
- 1N0412RXCPU244406



# See & Spray Ultimate Demo Insights

Premier Equipment Research Farm



# See & Spray Ultimate Demo Insights

## Premier Equipment Research Farm

License Fee Cost	
Fallow	\$1.25/ac
Corn	\$6/acre
Soybeans	\$6/acre

Last Activity Date	Field	Crop	Units	See & Spray Area Covered	See & Spray Area Applied	See & Spray Area Covered, Not Applied	See & Spray Area Covered, Not Applied (%)	Product Applied	Per Acre License Fee	Total Field License Cost	Approx. Per Acre Product Cost	Total Field Product Savings
7/23/2024	Research 62	Soy	Acres	101	69.2	31.6	31.40%	Yuma	\$6.00	\$189.60	\$11.60	\$366.56
6/21/2024	Research 71	Corn	Acres	15	4.8	10.3	68.10%	Transorb	\$6.00	\$61.80	\$7.95	\$81.89
6/21/2024	Research 63	Soy	Acres	101	52	48.8	48.40%	Transorb	\$6.00	\$292.80	\$7.95	\$387.96
6/19/2024	Norwich Charity	Soy	Acres	18	17.6	0.6	3.40%	Roundup/Enlist/Venture	\$6.00	\$3.60	\$27.67	\$16.60
5/24/2024	Research 71	Fallow	Acres	7	5.3	1.5	21.70%	Transorb/Xtend	\$1.25	\$1.88	\$19.15	\$28.73
5/23/2024	Research 63	Fallow	Acres	103	41.9	60.7	59.20%	Transorb	\$1.25	\$75.88	\$7.95	\$482.57
5/20/2024	Research 63	Soy	Acres	60	25.3	35.1	58.20%	Transorb/Xtend	\$6.00	\$210.60	\$19.15	\$672.17
5/16/2024	Research 63	Fallow	Acres	67	26.9	40.1	59.80%	Water (Used Transorb Price As a Hypothetical For Pricing Example )	\$1.25	\$50.13	\$7.95	\$318.80
5/13/2024	Research 62	Fallow	Acres	26	8.3	17.6	67.80%	Water (Used Transorb Price As a Hypothetical For Pricing Example )	\$1.25	\$22.00	\$7.95	\$139.92
5/10/2024	Research 63	Fallow	Acres	84	37.7	46.4	55.20%	Water (Used Transorb Price As a Hypothetical For Pricing Example )	\$1.25	\$58.00	\$7.95	\$368.88
5/10/2024	Research 63	Fallow	Acres	44	23.6	20.6	46.60%	Water (Used Transorb Price As a Hypothetical For Pricing Example )	\$1.25	\$25.75	\$7.95	\$163.77
			Sum Acres Covered	626					Sum License Cost	\$992.03	Sum Product Savings	\$3,027.83

Corn Totals			
See & Spray Area Covered	See & Spray Area Applied	See & Spray Area Covered, Not Applied	See & Spray Area Covered, Not Applied (%)
15	4.8	10.3	68.67%

Fallow Totals			
See & Spray Area Covered	See & Spray Area Applied	See & Spray Area Covered, Not Applied	See & Spray Area Covered, Not Applied (%)
331	143.7	186.9	56.47%

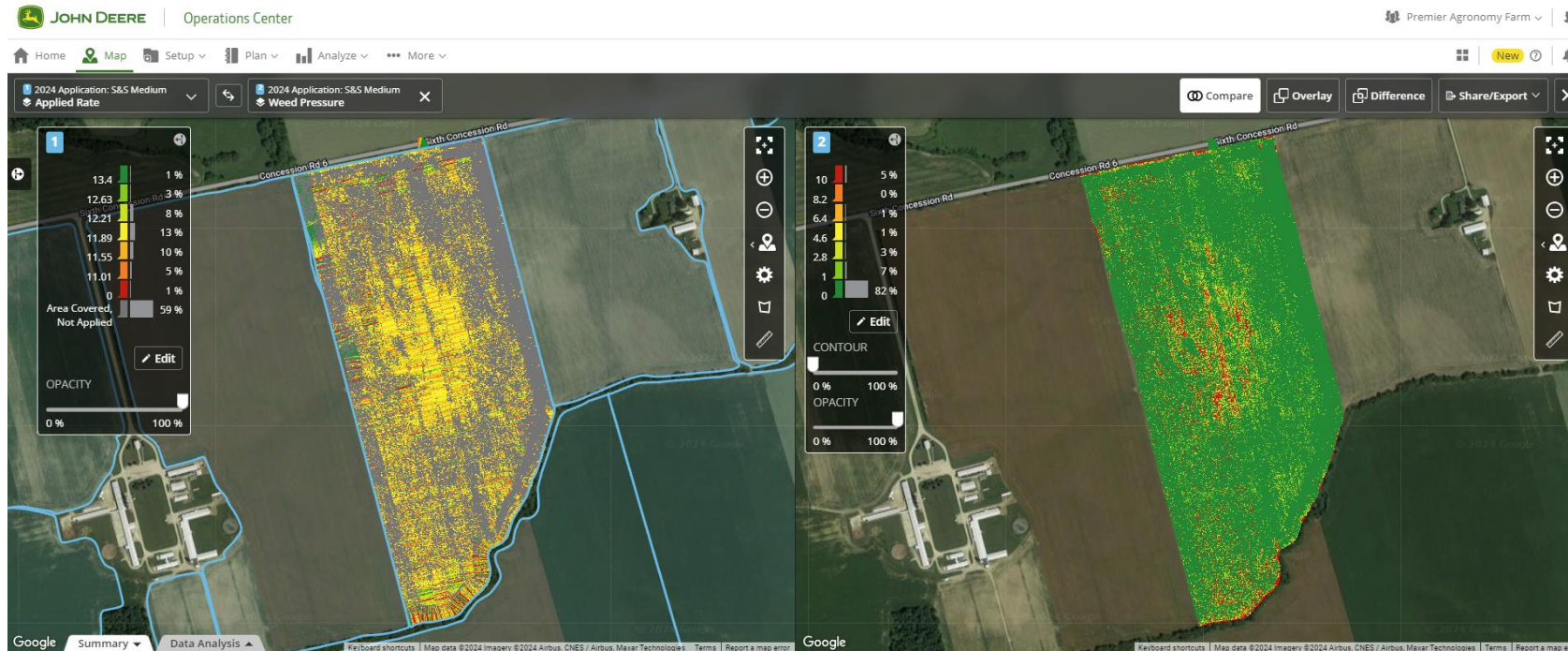
Soy Totals			
See & Spray Area Covered	See & Spray Area Applied	See & Spray Area Covered, Not Applied	See & Spray Area Covered, Not Applied (%)
280	164.1	116.1	41.46%

Corn + Soy + Fallow Totals			
See & Spray Area Covered	See & Spray Area Applied	See & Spray Area Covered, Not Applied	See & Spray Area Covered, Not Applied (%)
626	312.6	313.3	50.05%



# Operations Center: May 23<sup>rd</sup> Research 63 Fallow Application

## Premier Equipment Research Farm



### WORK TOTALS ⓘ

Download See & Spray™ Summary Report

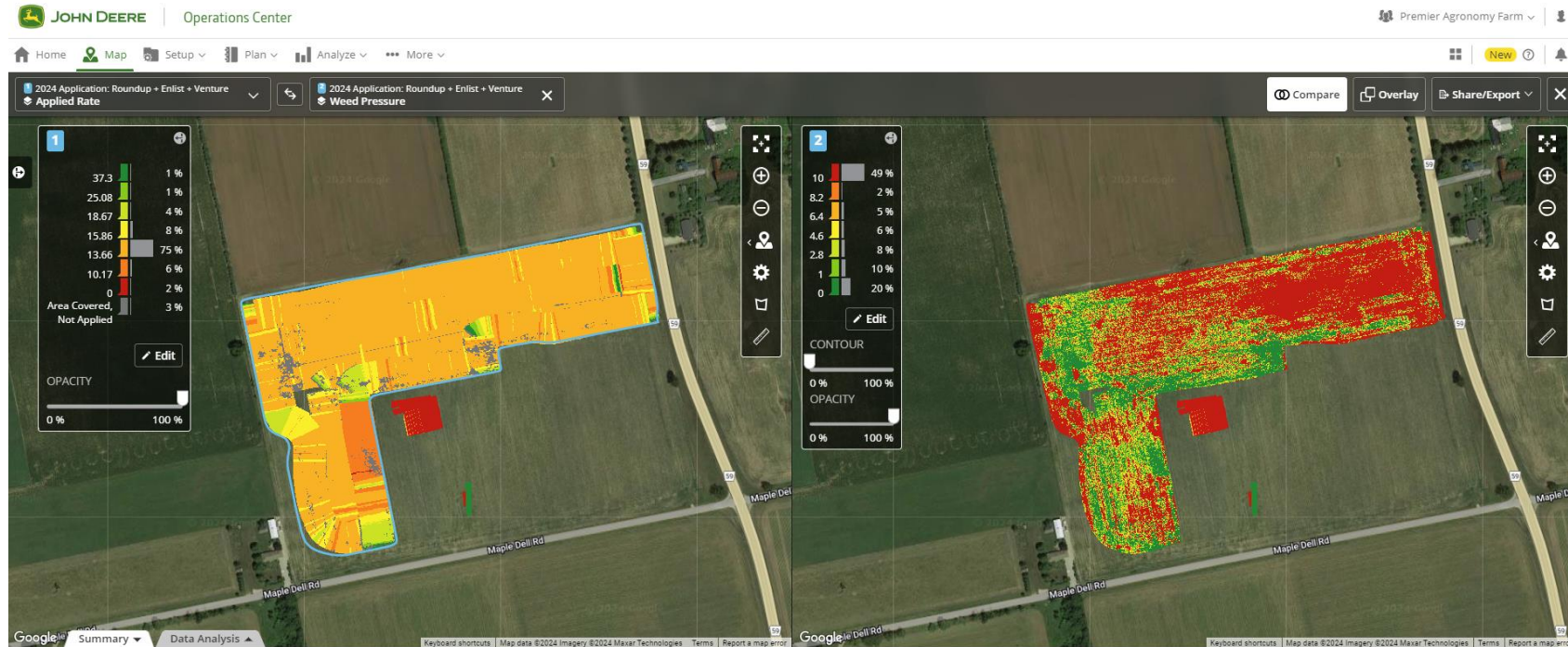
Area Type	Area	% of Area	Applied Rate	Applied Total	Target Rate	Target Total
Area Covered	100.1 ac	100 %	4.96 gal/ac	496.6 gal	12 gal/ac	1,201 gal
Area Applied	41 ac	41 %	12.11 gal/ac	496.6 gal	11.99 gal/ac	492 gal
Area Covered, Not Applied ⓘ	59.1 ac	59 %	---	---	12 gal/ac	709 gal

Area Not Applied  
59 %



# Operations Center: June 19<sup>th</sup> Norwich Charity Soy Application

## Premier Equipment Research Farm



**WORK TOTALS** ⓘ

Download See & Spray™ Summary Report

Area Type	Area	% of Area	Applied Rate	Applied Total	Target Rate	Target Total
Area Covered	18.8 ac	100 %	16.17 gal/ac	303.9 gal	14.6 gal/ac	275 gal
Area Applied	18.2 ac	96.7 %	16.7 gal/ac	303.9 gal	14.51 gal/ac	264 gal
Area Covered, Not Applied ⓘ	0.6 ac	3.3 %	---	---	14.8 gal/ac	9 gal

Area Not Applied 3.3 %

# See & Spray Ultimate Spray Sensitivity LEAD Trial

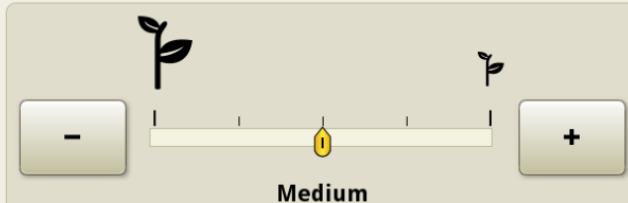
Premier Equipment Research Farm



**Spray Sensitivity** ⓘ


Select how sensitive the See & Spray system will be to targeting hard-to-see plants. Higher sensitivity settings may be needed for the system to spray plants that are harder to see (smaller, unusually shaped, obscured by foliage or soil).

**Note:** Selecting lower sensitivity settings results in less frequent spraying and higher product savings. Selecting higher sensitivity results in more frequent spraying and higher coverage.




Medium

✕ Cancel    ✓ OK



See & Spray

## How to Adjust Spray Sensitivity



[John Deere YouTube - Adjusting Spray Sensitivity | John Deere See & Spray](#)

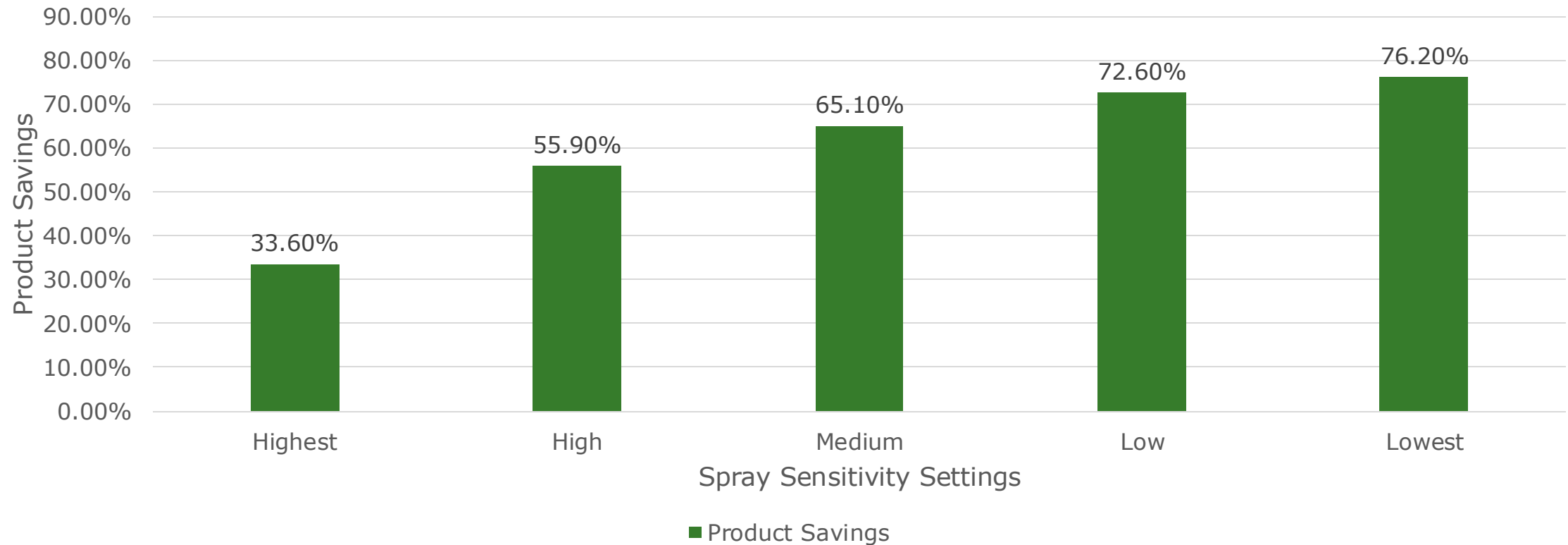
***Question: How will editing the spray sensitivity setting impact the amount of product saved by See and Spray?***

# See & Spray Ultimate Spray Sensitivity LEAD Trial

Premier Equipment Research Farm



## See & Spray Ultimate Sensitivity LEAD Trial



Methodology: All tests were done in the same field on the same area of 2.4 acres. Target rate 12 GPA. Target speed 12 MPH.



# See & Spray Ultimate Spray Sensitivity LEAD Trial

Premier Equipment Research Farm



Map: Applied Rate



**Highest Spray Sensitivity:**

33.6% Product Savings

Map: Applied Rate



**Lowest Spray Sensitivity:**

76.2% Product Savings

**Outcome:** Validated variance in product savings due to different sensitivity settings on same area of field.

**Recommendation:** Ensure that the potential impact of spray sensitivity settings on weed control/product savings is understood and spray sensitivity is optimized for customers' objectives



**JOHN DEERE**